



S5 2024



HAYWARD, CA (USA) // April 2, 2024 // Magico—the leader in high-performance loudspeaker design and manufacture—is pleased to announce the S5 loudspeaker.

The year 2023 saw the launch of the new-generation S Series. The first-of-its-kind S3 has since been heralded worldwide as a groundbreaking design. Magico's 20th anniversary is being celebrated in 2024, and with it, the new S5 loudspeaker continues what began with the S3. Offering an even wider performance envelope, the S5 features numerous cutting-edge advancements in a substantially larger package, while maintaining the elegance the S Series is renowned for.

Magico's comprehensive design process

The Magico S5 enjoys benefits derived from a lengthy development project that yielded knowledge and processes now used in the vaunted M Series. A Polytec Laser Vibrometer was leveraged to precisely measure the most minute vibration of the cabinet panels and calculate the sound-pressure levels they generate. This enabled Magico to address them early in the design process, resulting in the desired target: the S5's cabinet adds no coloration to the sound.

The Klippel Near-Field Scanner robot enabled multiple acoustic measurements of the 3D sphere around the S5, which gave a complete view of the on- and off-axis response of the speaker. This data enabled Magico the ability to push ever closer to the theoretical ideal acoustic response of a multi-way loudspeaker. The result is nothing short of extraordinary performance.



Sculpted enclosure

The newly designed curved-and-shaped aluminum cabinet—optimized using simulated 3D modeling to minimize internal resonances—maximizes stiffness while enabling optimal damping strategies. The front baffle is curved for minimal diffraction effects. Notably, the S5's internal volume was increased by 31% versus the previous version. The larger bass cabinet enables the S5's low-frequency response to plumb 5Hz lower—to 20Hz—while keeping the same sensitivity (88dB).

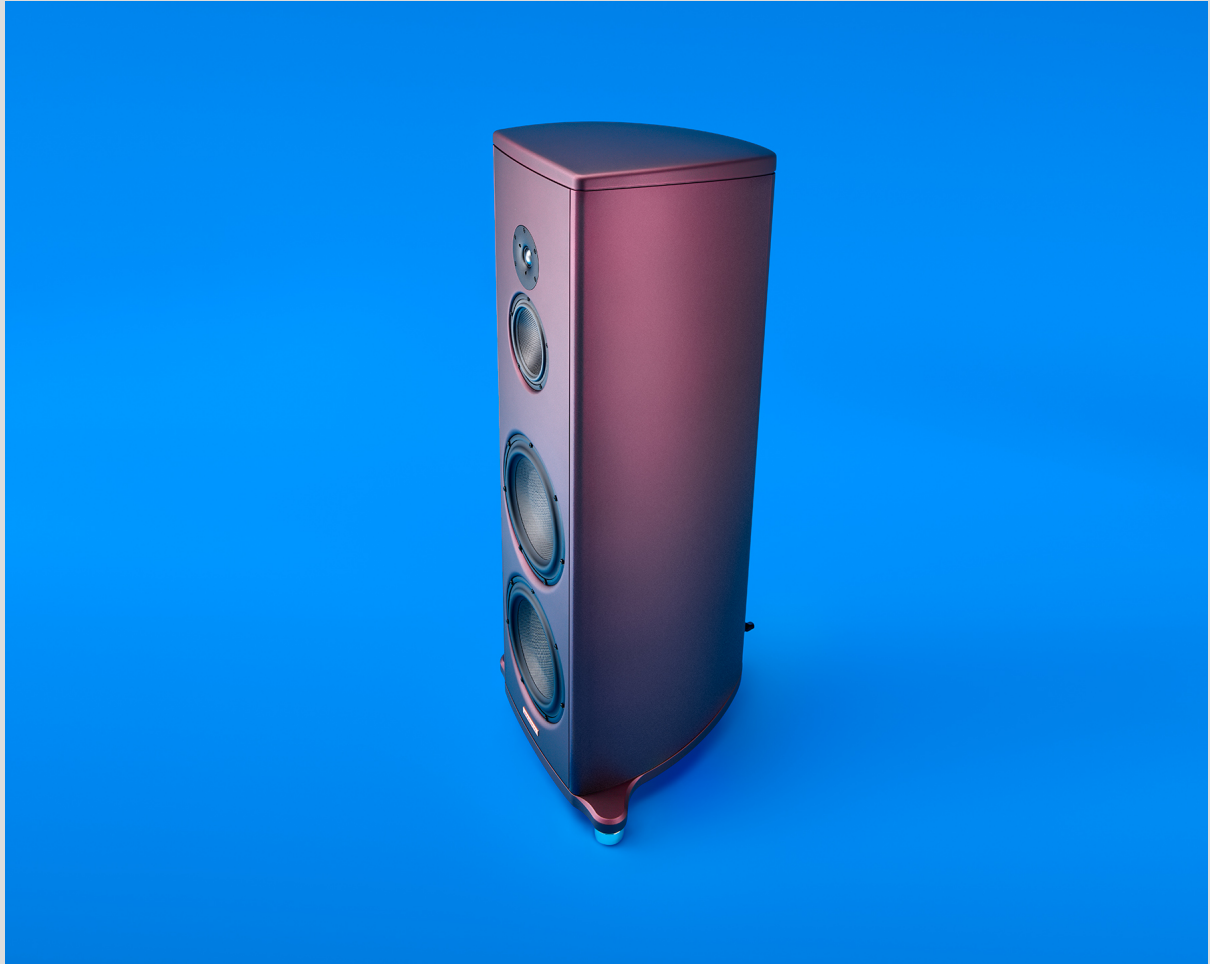


Innovative driver technology

Driver technology is key to all Magico loudspeakers. The Magico engineering team has spent countless hours in intense research and development to create the highest-performing drive units available today. The S5 is a showcase for these efforts.

A key change from previous Magico cones is the aluminum-honeycomb core sandwiched by graphene-reinforced carbon-fiber skins. The Nano-Tec v.8 cone's revolutionary core structure—possible only with recently developed manufacturing techniques—allows lower thickness, lighter weight, and more effective damping. The result has pushed distortion lower than ever before.

In addition to vastly improved cone construction, Magico has invested three years on a new generation of driver chassis. This third-generation chassis structure improves on both mechanical and acoustical parameters, like much improved force distribution, better suspension designs, and a dual-post configuration that equalizes dynamic tensile wire forces. The new chassis achieves an ideal combination of stiffness and damping while allowing minimal acoustic contribution by reducing modes and maximizing air flow.



All-star driver lineup

The S5's midrange is 6" in diameter with a 3" voice coil. It employs the Magico Nano-Tec v.8 cone and is built into a third-generation chassis. This driver features two extra-large neodymium magnets, a full copper cap, and a pure titanium voice coil. The S5's midrange sets a new benchmark for measured performance in both the frequency and time domains. The result is midrange clarity that will leave you speechless.

Bass in the S5 is provided by a pair of 10" woofers. Each driver sports a 5" titanium voice coil and a Nano-Tec v.8 cone built into a third-generation chassis. This woofer has a huge copper cap and is capable of one half inch of linear movement with the lowest distortion available in a driver of its size. This enables the S5 to provide accurate, undistorted low frequencies while producing high maximum sound-pressure levels. The S5 produces low frequencies with awe-inspiring power and depth, while maintaining fidelity to the source not heard outside of a Magico loudspeaker.

The S5's tweeter is based on the model used in the M Series. The S5's 28mm tweeter uses a diamond-coated beryllium diaphragm. A neodymium-based motor system yields the lowest distortion possible today along with even greater power handling than previous S Series speakers. Careful FEA modeling allowed Magico to improve the mechanical and acoustical performance of the back chamber. The S5's high frequencies are chock-full of textural detail and the sonic subtleties Magico is renowned for.

Proven crossover design

The S5's three-way Elliptical Symmetry Crossover (ESXO) is accomplished with an acoustical-target 24dB-slope using a Linkwitz-Riley filter. Maximum frequency and phase linearity is accomplished while keeping intermodulation distortion to vanishing levels. The S5 uses a full complement of state-of-the-art components from Mundorf of Germany, including the company's MResist Ultra Resistors. New to the S5 are Mundorf MCoil Foil coils to lower the noise floor by reducing microphonic effects. The result of the S5's ESXO crossover is superior coherence from the speaker's four drive units.

Accoutrements

The S5 is available in a generous selection of premium finishes: six Softec choices that are rich in color depth, smooth to the touch, and very durable; and six High Gloss finishes that are expertly polished to a lustrous shine with a clear top coat. The three-footer support system uses constrained-layer damping and premium materials for greatly enhanced sonic performance.

S5 orders placed in the 2024 calendar year will include a special accessory box celebrating Magico's 20th anniversary. This memento was designed and crafted specifically to accompany the S5, shaped with the curvature of the S5's cabinet. Each custom machined-aluminum accessory box is engraved with your S5's serial numbers and the Magico "20" anniversary logo.



A true powerhouse

It would not be embellishment to say that Magico's new S Series offers an abundance of the company's most cutting-edge advancements in loudspeaker design to date. The S3 harkened in a new era, and now the S5 adds a gravitas that simply can't be ignored.

High technology meets a muscular new form factor. The mighty Magico S5 is now a reality.



S5 Specifications

Configuration: 3-way, 4-driver design

Tweeter: 1.1" (28mm) MB5FP pure-beryllium, diamond-coated diaphragm

Midrange: 6" MA6004RTC Mk2 midrange driver

Woofer: 10" MAG10508 RTC bass driver (2)

Sensitivity: 88dB

Impedance: 4 ohms

Frequency Response: 20Hz—50kHz

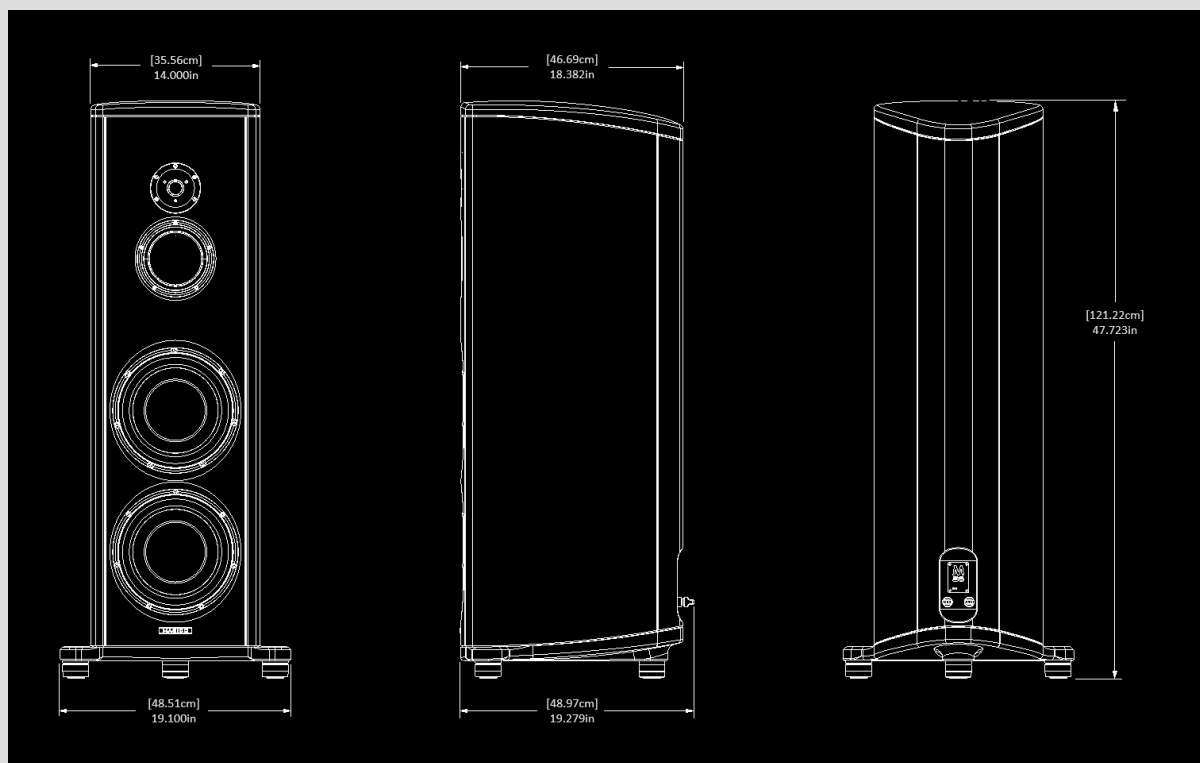
Recommended power: 50W—1000W

Dimensions: 47.72"H (121.2cm) x 19.28"D (49cm) x 19.1"W (48.5cm) (measurements with outriggers)

Weight: 262 pounds (118.8kg)

Note: All features and specifications subject to change.

Ship date: Q3 2024





The Magico S5 follows the release of the award-winning S3.

For more information contact Peter Mackay, V.P. Global Sales at Magico LLC.
Telephone: 1-510-649-9700, Ext 104.